

# Accessories WZS series



## Circulation switch ZS 2

**Application** Can be used in conjunction with the circulation controller EC 1 for demand-controlled circulation control via opening and closing of a tap.

**Description** Circulation switch in pipe piece for direct mounting in the insulation of the hot water circulation system WZS 100.  
**Mandatory for optimum operation of the circulation controller EC 1.**

**Technical specifications**  
**Brass pipe piece**  
G¾ female, DN 20, PN 10

**Operating temperature range**  
Medium: Max. 100 °C

**Switching point**  
1.5 ± 0.7 l/min in horizontal mounting position  
1.8 ± 0.75 l/min in other mounting position

**Switching contact**  
Closes if value is exceeded

**Output**  
Voltage-free contact

**Sheathed cable**  
Length: 1.5 m PVC



## Water safety group assembly WSG 150

Safety group assembly for sealed hot drinking water systems or drinking water heaters as per EN 806 to secure the inlet of the energy storage tank (hot water tank/stratified storage tank) and for protection against overpressure and back-circulation.

Compact, tightness-tested storage tank connection kit with integrated backflow preventers, shut-off valve and safety valve. Easy adaptation to on-site requirements by rotating the safety valve. WSG 150 is very easy to mount, even directly to a water heater. WSG 150 can be extended at the 1"connection (remove cap).

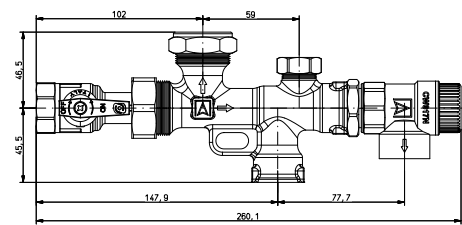
**System connections**  
G¾ female

**Operating temperature range**  
Medium: Max. 95 °C

**System pressure**  
Max. 10 bar

**Safety valve**  
Opening pressure: 6 bar

Dimensions (mm)



DG: G, PG: 2	Part no.	Price €
Circulation switch in pipe piece ZS 2	68408	
Water safety group assembly WSG 150	68412	